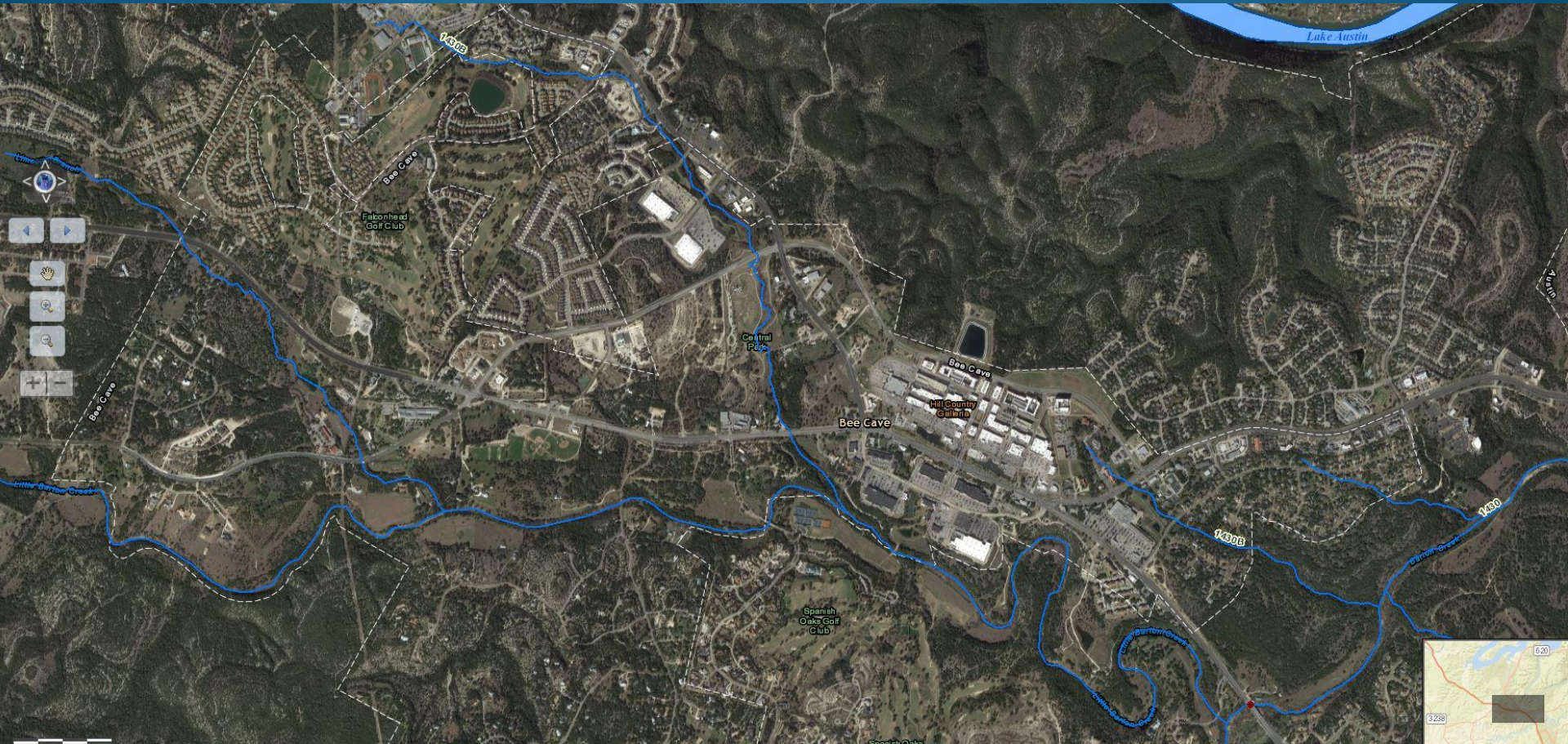


Storm Water Quality



When It Rains, It Drains



Where Does Storm Water Go In Our Community?

- Travels over land
- Carried through municipal separate storm sewer system (MS4)
- Discharges into Creeks and travel to Colorado River

Storm Water Pollutants

- | | | |
|--------------|-------------------|--------------|
| ➤ Sediment | ➤ Oil & Grease | ➤ Bacteria |
| ➤ Nutrients | ➤ Trace Metals | ➤ Chlorides |
| ➤ Fertilizer | ➤ Toxic Chemicals | ➤ Pesticides |

A "Point" of Confusion: Point Source vs. Nonpoint Source

■ POINT Source

- Travels through a conveyance system
- Regulated under permit program

■ NON-POINT Source

- Runoff that is not a point source
- Addressed through various programs



A FEW COMMON CONTAMINANTS



OIL AND GASOLINE



CIGARETTE BUTTS



CONSTRUCTION EROSION



GRASS CLIPPINGS



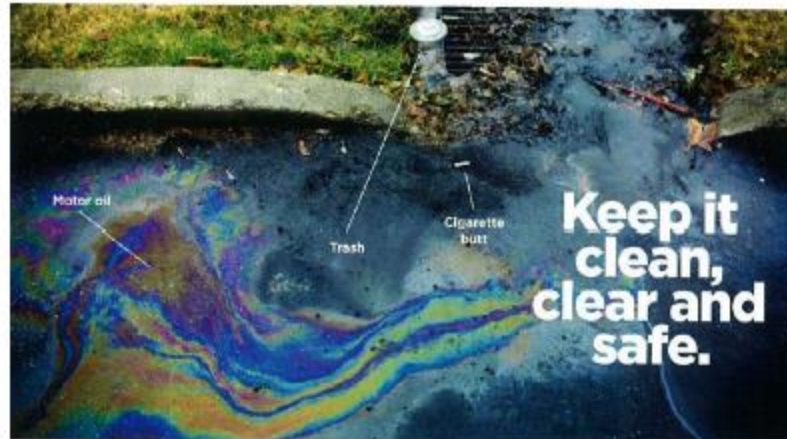
**THIS IS
LITTER TOO.**



Culprit

Stormwater Runoff: The Dirty Truth

- Stormwater runoff contributes to problems in water quantity (flooding) and water quality (pollution)
- Unfiltered stormwater can have contaminants and bacteria such as:
 - Oil and gasoline
 - Fertilizers
 - Pesticides
 - Soil
 - Soap
 - Grass clippings
 - Litter
 - Pet waste
 - Cigarette butts

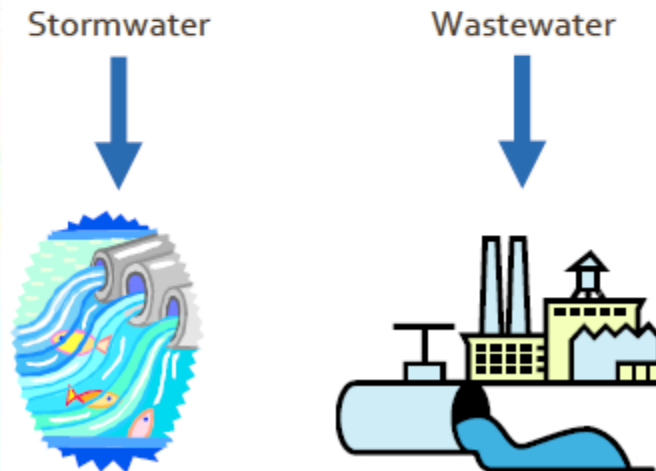


The only thing that should go down storm drains is clean rainwater!

What is Stormwater: Rainwater that originates during a storm event. Portion of rainwater does not soak into the ground and generates surface runoff.

Where Does it Go?

- Stormwater runoff flows toward storm drains and into a system of underground piping
- Stormwater runoff flows directly into our creeks and rivers, **untreated and unfiltered**



HOW CAN YOU HELP?



DON'T LITTER

Put your trash in a receptacle where it can be collected. A cigarette butt on the car window will like end up in the creek.



USE FERTILIZER/ PESTICIDES SPARINGLY

Overuse of fertilizers and pesticides can harm and kill the threatened and endangered aquatic life that live in the river.



STOOP AND SCOOP

Picking up your pet's waste keeps harmful bacteria out of the rivers where we swim and where animals live.

- Asking your landscaper to avoid blowing leaves & grass clippings onto sidewalks and streets.
- Applying fertilizers, herbicides and pesticides when rain is not expected.

What You Can Do:

- Dispose materials properly
- Pick up after your pooch
- Disposing hazardous chemical properly

Toxic.Free.Home.



Participate in Your Local Household Hazardous Waste Roundup



What You Can Do:

**Stopping soil erosion begins
in our own backyards.**



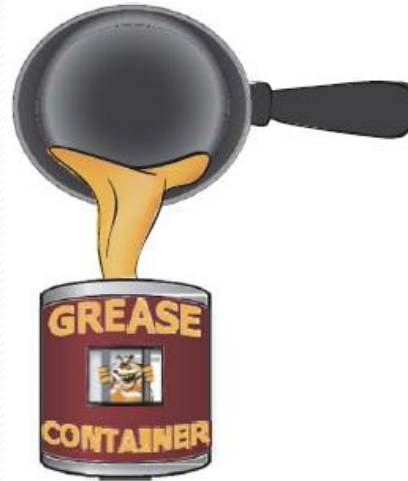
Remember:

**WHEN YOU'RE WASHING YOUR CAR IN
THE DRIVEWAY, REMEMBER YOU'RE
NOT JUST WASHING YOUR CAR
IN THE DRIVEWAY.**



All the soap, scum, and oily grit runs along the curb. Then into the storm drain and directly into our lakes, streams and Puget Sound. And that causes pollution, which is unhealthy for fish. So how do you avoid this whole mess? Easy. Wash your car on grass or gravel instead of the street. Or better yet, take it to a car wash where the water gets treated and recycled.

DO



DON'T



Don't pour Oil or Grease down the drain



**Leaves don't
belong in the
stormdrain**



Municipal Separate Storm Sewer System (MS-4)

- MS-4 is TCEQ's general permit to authorize discharges from a municipality into surface water in the state.
- Based on population, City of Bee Cave is classified as a Level II small MS-4 under the TCEQ small MS-4 general permit.

City of Bee Cave BMPs and MCMs

- The City implements 22 Best Management Practices (BMP) over a period of 5 years to meet the minimum requirements of the small MS4 general permit.
- Six (6) Minimum Control Measures (MCM) are required for the COBC to minimize or eliminate stormwater pollutant discharges into Storm Sewer System and provide water quality protection for receiving water bodies.

City of Bee Cave SWMP

The City of Bee Cave has developed Stormwater Management Program (SWMP) to comply with State and Federal regulations and to improve the quality of life in our city.

The six storm water quality minimum controls are as follows:

- ❖ Public Education and Outreach
- ❖ Public Involvement/Participation
- ❖ Illicit Discharge Detection and Elimination (IDDE)
- ❖ Construction Site Storm Water Runoff Control
- ❖ Post-Construction Storm Water Management in New Development and Redevelopment
- ❖ Pollution Prevention/Good Housekeeping for Municipal Operations and Maintenance



REPORTING LINE

- 512-767-6675
- stormwater@beecavetexas.gov

Storm Water Quality Outreach

You can help keep our streams healthy by participating in Stream Cleanup projects or Storm Drain Marking events. The City is looking for volunteer organizations to participate in stream cleanup or to help glue markers on storm drain inlets.